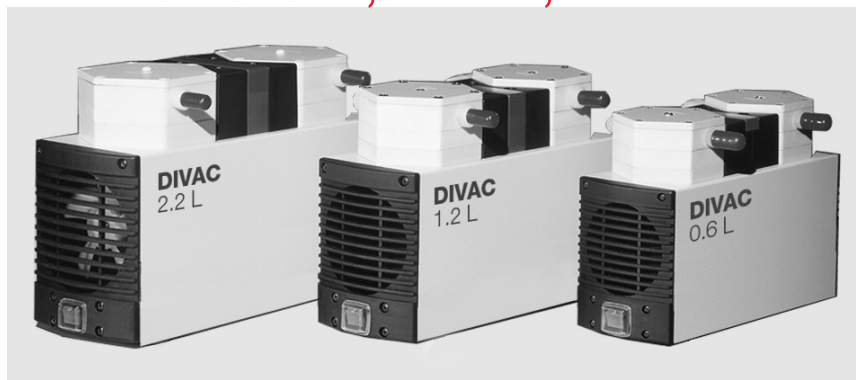


Products

Diaphragm Vacuum Pumps for the Chemical Laboratory

Dual-Stage Diaphragm Vacuum Pumps

DIVAC 0.6 L, 1.2 L, 2.2 L

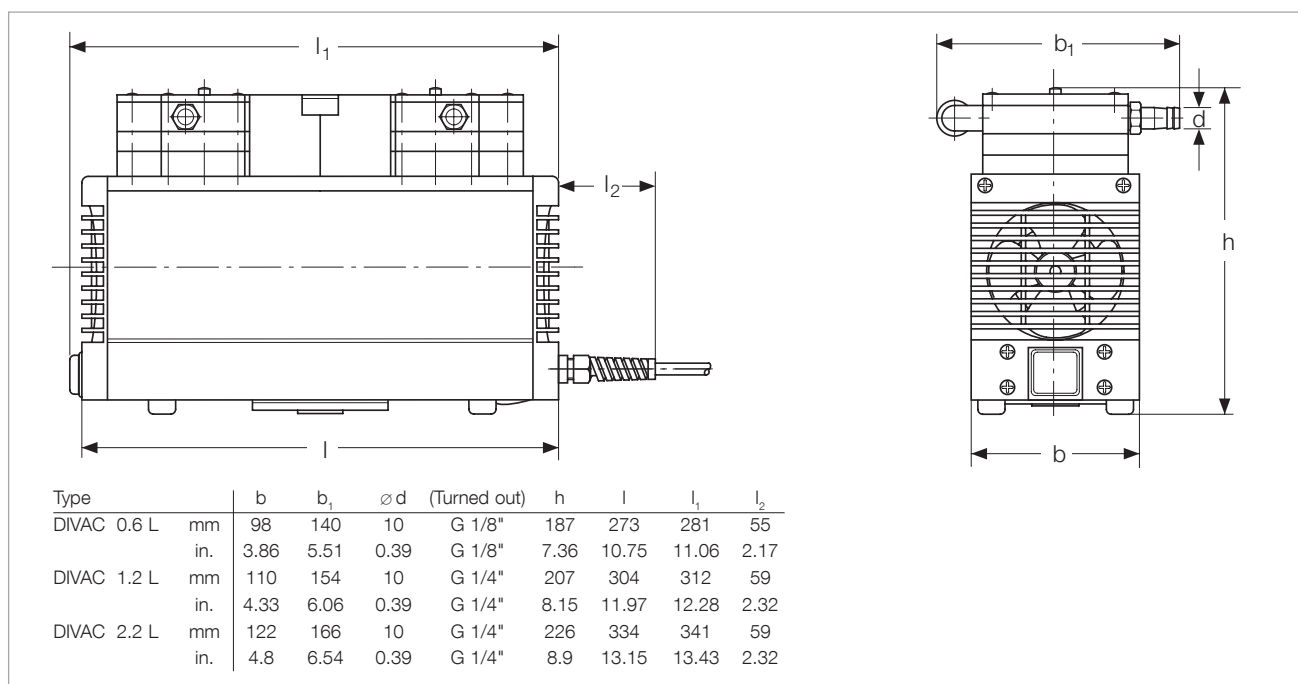


Typical Applications

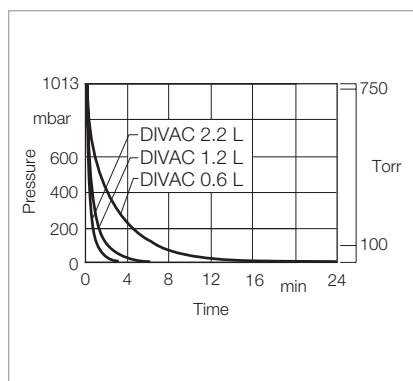
Vacuum generation for

- Rotary evaporators
- Drying chambers
- Filtration units
- Distillation configurations
- Gel dryers

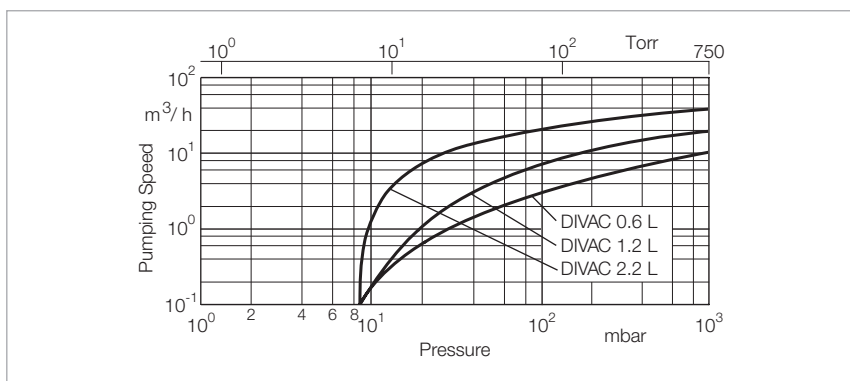
Dual-stage diaphragm vacuum pumps DIVAC 0.6 L, 1.2 L, 2.2 L



Dimensional drawing for the DIVAC 0.6 L, 1.2 L, 2.2 L



Curves of pump-down time of a 10 l vessel



Curves of pumping capacity

Technical Data

DIVAC

		0.6 L	1.2 L	2.2 L
Max. pumping speed (atm.)	m ³ /h ¹ (cfm)	0.6 (0.4)	1.2 (0.7)	2.0 (1.2)
Ultimate pressure	mbar (Torr)	≤ 8 (≤ 6)	≤ 8 (≤ 6)	≤ 8 (≤ 6)
Max. exhaust back pressure (absolute)	mbar (Torr)	2000 (1500)	2000 (1500)	2000 (1500)
Pump heads		2	2	2
Connection				
Inlet (suction side)		Hose nozzle ID 10	Hose nozzle ID 10	Hose nozzle ID 10
Exhaust (delivery side)		Hose nozzle ID 10	Hose nozzle ID 10	Hose nozzle ID 10
Thread (suction and delivery side)	G	G 1/8"	G 1/4"	G 1/4"
Noise level acc. to DIN 45 635 Part 13, approx.	dB(A)	47	50	52
Permissible gas admission temperature, max.	°C (°F)	+5 to +40 (+41 to +104)	+5 to +40 (+41 to +104)	+5 to +40 (+41 to +104)
Permissible ambient temperature, max.	°C (°F)	+5 to +40 (+41 to +104)	+5 to +40 (+41 to +104)	+5 to +40 (+41 to +104)
Voltage / nominal frequency (1-ph. motor)				
Schuko plug	V / Hz	230 ± 10% / 50	230 ± 10% / 50	230 ± 10% / 50
NEMA plug	V / Hz	115 ± 10% / 60	115 ± 10% / 60	115 ± 10% / 60
NEMA plug	V / Hz	100 ± 10% / 50/60	100 ± 10% / 50/60	100 ± 10% / 50/60
Protective class	IP	44	44	44
Motor power ¹⁾	W	90	120	245
Current consumption ¹⁾	A	0.6	0.7	1.8
Motor speed				
50 Hz	min ⁻¹	1500	1500	1500
60 Hz	min ⁻¹	1800	1800	1800
Dimensions (W ¹⁾ x H ¹⁾ x D), approx.	mm (in.)	281 x 140 x 187 (11.06 x 5.51 x 7.36)	312 x 154 x 207 (12.28 x 6.06 x 8.15)	341 x 166 x 226 (13.43 x 6.54 x 8.9)
Weight, approx.	kg (lbs)	6.9 (15.2)	9.3 (20.5)	12.6 (27.8)
Material				
Pump head		PTFE (Teflon)	PTFE (Teflon)	PTFE (Teflon)
Structured diaphragm		PTFE coated	PTFE coated	PTFE coated
Valves		FFPM (Kalrez)	FFPM (Kalrez)	FFPM (Kalrez)
Nozzles		PVDF (Solef)	PVDF (Solef)	PVDF (Solef)

Ordering Information

DIVAC

	0.6 L	1.2 L	2.2 L
	Part No.	Part No.	Part No.
Diaphragm vacuum pump 230 V, 50 Hz, with 2.3 m (8 ft) power cord and Schuko plug	135 00	135 06	135 12
Diaphragm vacuum pump 230 V, 50/60 Hz, with 2.3 m (8 ft) power cord and Schuko plug	-	-	135 11
Diaphragm vacuum pump 100 V, 50/60 Hz, with 2.3 m (8 ft) power cord and NEMA plug	135 02	135 08	135 14
Diaphragm vacuum pump 115 V, 60 Hz, with 2.3 m (8 ft) power cord and NEMA plug	135 03	135 09	135 15
Spare parts kit consisting of 2 diaphragms, 4 gasket rings, 4 valve plates	EK 135 23	EK 135 24	EK 135 25
Hose nozzle kit consisting of 2 hose nipples, piping	-	200 65 006	200 65 007

¹⁾ For 230 V, 50 Hz version

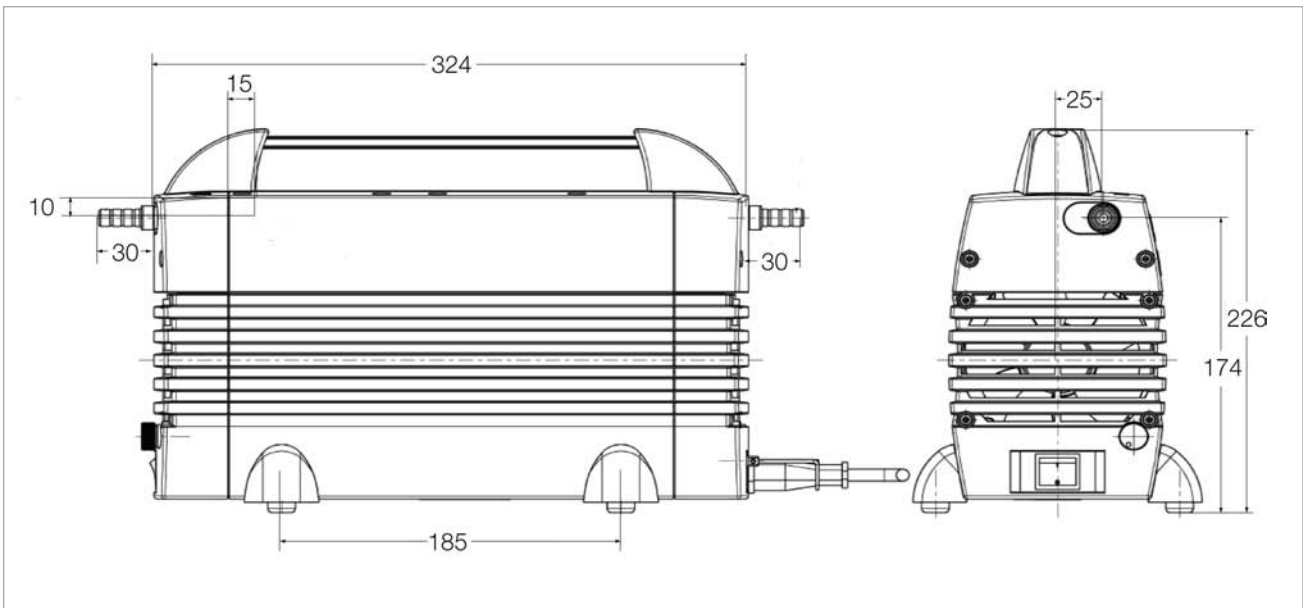
Three-Stage Diaphragm Vacuum Pumps

DIVAC 1.4 HV3C

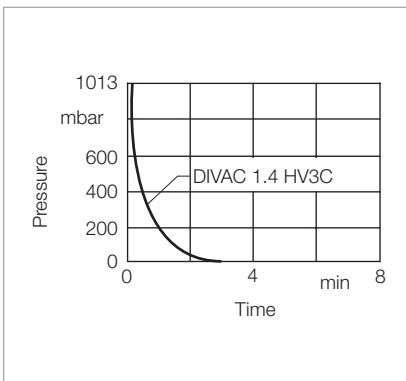


Three-stage diaphragm vacuum pump DIVAC 1.4 HV3C

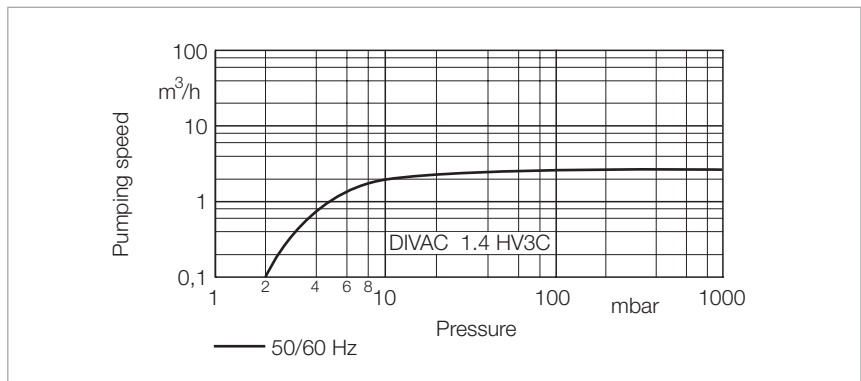
The DIVAC 1.4 HV3C is a three-stage diaphragm pump capable of resisting chemicals and offering an improved pumping performance. Its speed is infinitely variable from 700 to 1600 rpm so that the pumping speed of the pump can be easily adapted to differing requirements. The built-in textured diaphragm is made of EPDM and has been coated with PTFE. The valves are made of KALREZ® thereby ensuring excellent resistance also in connection with aggressive gases. Owing to the three-stage design, pressures of 2 mbar can be attained very easily.



Dimensional drawing for the DIVAC 1.4 HV3C



Curves of pump-down time of a 10 l vessel



Curves of pumping capacity

Technical Data

DIVAC 1.4 HV3C

Max. pumping speed	m ³ /h (cfm)	1.3 (0.77)
Ultimate pressure	mbar (Torr)	≤ 2.0 (≤ 1.5)
Max. exhaust back pressure (absolute)	mbar (Torr)	1500 (1125)
Pump heads		3
Connection		
Inlet (suction side)	DN	Hose nozzle ID 10
Exhaust (delivery side)	DN	Hose nozzle ID 10
Thread (suction and delivery side)	G	G 1/8"
Noise level acc. to DIN 45 635 Part 13, approx.	dB(A)	48
Permissible gas admission temperature	°C (°F)	+5 to +40 (+41 to +104)
Permissible ambient temperature	°C (°F)	+5 to +40 (+41 to +104)
Voltage / nominal frequency	V / Hz	90 – 230 / 50 – 60
Protective class	IP	20
Motor power ¹⁾	W	135
at ultimate pressure	W	35
Current consumption ¹⁾	A	1.3
Motor speed	min ⁻¹	700 to 1600
Dimensions (W x H x D), approx.	mm (in.)	324 x 158 x 226 (12.76 x 6.22 x 8.90)
Weight, approx.	kg (lbs)	8.6 (18.99)
Material		
Pump head		Ryton
Structured diaphragm		EPDM coated with PTFE
Valves		FFPM (Kalrez)
Nozzles		PTFE

Ordering Information

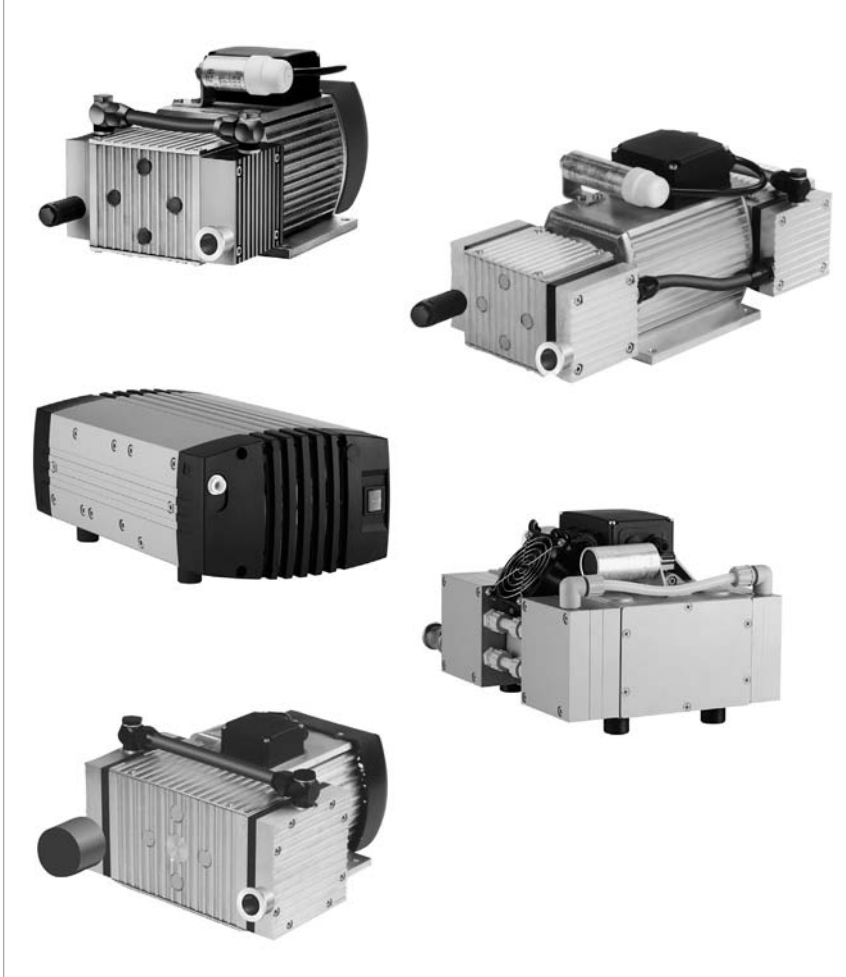
DIVAC 1.4 HV3C

	Part No.
Diaphragm vacuum pump 90 – 230 V, 50 – 60 Hz, with 2.3 m (8 ft) power cord and Schuko plug	135 20 V
Accessories Exhaust silencer 1.4 with connection G 1/8"	127 90 A

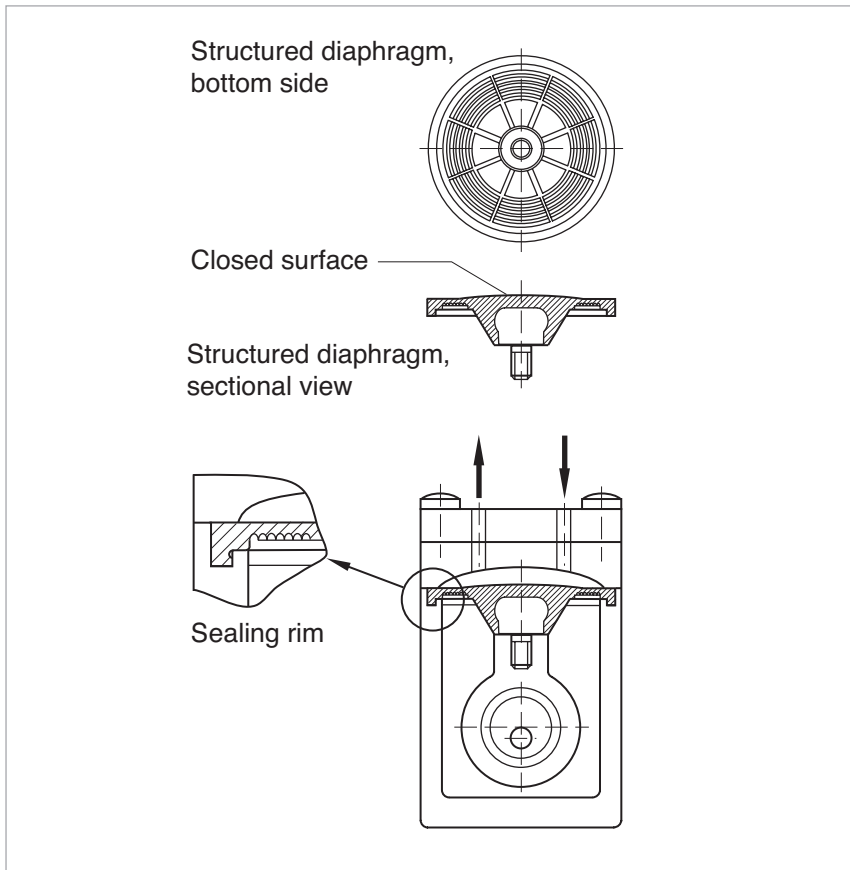
¹⁾ For 230 V, 50 Hz version

Dry Compressing Backing Pumps for Turbomolecular Pumps

DIVAC 0.8 T to 4.8 VT



Our dry compressing backing pumps from the DIVAC T series are now supplemented by the three-stage DIVAC 1.4 HV3 and the DIVAC 3.8 HV3. Like the proven DIVAC T series, these new models also ensure a forevacuum free of hydrocarbons. Owing to their three-stage design, they provide especially within the lower pressure ranges a higher pumping speed and are therefore even better suited as backing pumps for turbomolecular pumps. But they are also used as backing pumps operating in the rough and medium vacuum range to pump clean media.



Diaphragm pump with structured diaphragm

The structured diaphragm with its sealed surface provides the basis for a long service life and a low base pressure.

Advantages to the User

- Dry compressing, free of oil and hydro-carbons
- Matched to the turbomolecular pumps from Leybold (SL 80 to TURBOVAC 450i)
- Low ultimate pressure
- ISO-KF flange at the intake port
- Fully equipped with cable, switch (ON/OFF) and plug
- Better performance and smaller size through the use of structured diaphragms
- Low vibration levels through dynamic mass balancing (in VT pumps)
- Lower maintenance costs and long maintenance intervals through the use of high-quality and well-proven components
- Simple maintenance
- Favourable price-to-performance ratio
- Can be operated in any position

Typical Applications

- Backing pump for wide pressure range turbomolecular pumps
- Mass spectrometers
- Medical equipment
- Analyzes
- For laboratory applications also with corrosive media
- General use for rough and fine vacuum applications

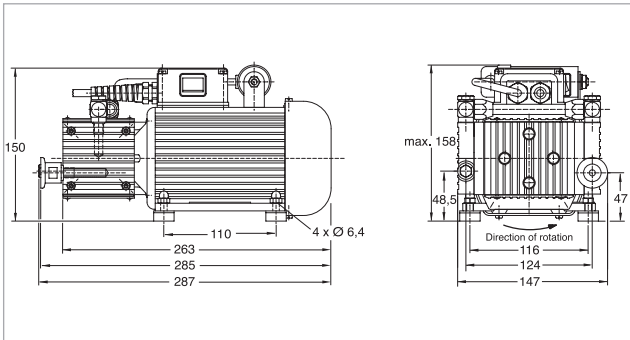
DIVAC 0.8 T and 0.8 LT



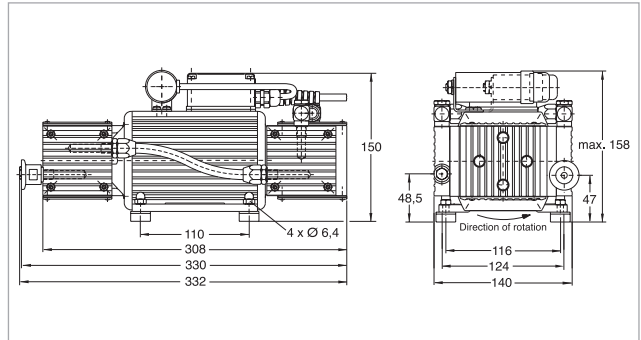
DIVAC 0.8 T



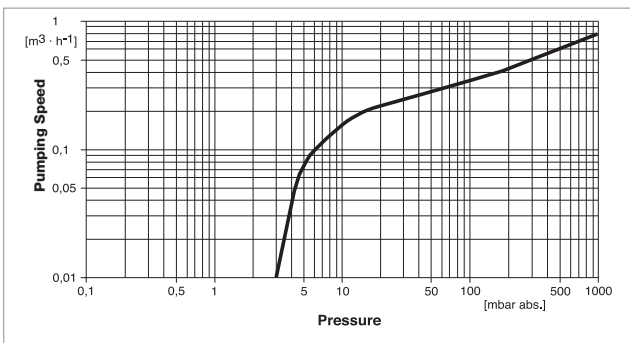
DIVAC 0.8 LT



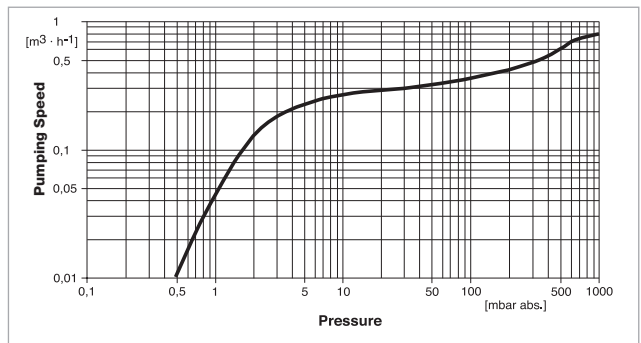
Dimensional drawing for the DIVAC 0.8 T



Dimensional drawing for the DIVAC 0.8 LT



Pumping speed curve of the DIVAC 0.8 T



Pumping speed curve of the DIVAC 0.8 LT

Technical Data

DIVAC

		0.8 T	0.8 LT
Max. pumping speed (atm.)	m ³ /h (cfm)	0.77 (0.45)	0.77 (0.45)
Ultimate pressure (absolute)	mbar (Torr)	≤ 3.0 (≤ 2.25)	≤ 0.5 (≤ 0.38)
Max. exhaust back pressure (absolute)	mbar (Torr)	2000 (1500)	2000 (1500)
Pump heads		2	4
Connection			
Inlet (suction side)	DN	16 KF	16 KF
Exhaust (delivery side)	DN	Silencer	Silencer
Thread (suction and delivery side)		G 1/8"	G 1/8"
Noise level acc. to DIN 45 635 Part 13, approx.	dB(A)	49	53
Permissible gas admission temperature	°C (°F)	+5 to +40 (+41 to +104)	+5 to +40 (+41 to +104)
Permissible ambient temperature	°C (°F)	+5 to +40 (+41 to +104)	+5 to +40 (+41 to +104)
Voltage / nominal frequency (1-ph. motor)			
Schuko plug	V / Hz	198 – 264 / 50/60	230 / 50 ± 10%
NEMA plug	V / Hz	90 – 127 / 50/60	115 / 60 ± 10%
Protective class	IP	44	44
Motor power	W	50	80
Current consumption	A	0.4	0.5
Nominal speed, approx. (50/60 Hz)	min ⁻¹	1500/1800	1500/1800
Dimensions (W x H x D), approx.	mm (in.)	285 x 150 x 150 (11.22 x 5.9 x 5.9)	332 x 150 x 150 (13.07 x 5.9 x 5.9)
Weight, approx.	kg (lbs)	5.9 (13.02)	7.5 (16.56)
Material			
Diaphragm		Neoprene	Neoprene
Valves		EPDM	EPDM
Pump head		Aluminum	Aluminum

Ordering Information

DIVAC

	0.8 T	0.8 LT
	Part No.	Part No.
Diaphragm vacuum backing pumps for turbomolecular pumps including 1 m (3.5 ft) long mains cord, country-specific plug, silencer, rubber feet, as well as ON/OFF switch 198 – 264 V / 50/60 Hz 230 V ± 10% / 50 Hz	127 80 -	- 127 83
Spare parts kit consisting of 2 diaphragms, 4 valves, 4 valve gaskets, 4 piping gaskets	EK 127 95	EK 127 95 (2x)
Exhaust silencer	127 98	127 98

T = For use in connection with Turbomolecular pumps

L = Very low ultimate pressure (Low pressure)

V = Low vibration levels (Low Vibration)

DIVAC 1.4 HV3 and 3.8 HV3

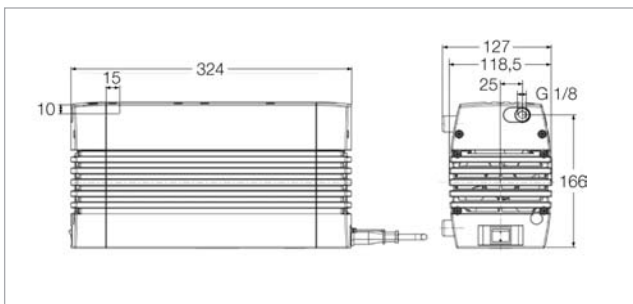


DIVAC 1.4 HV3

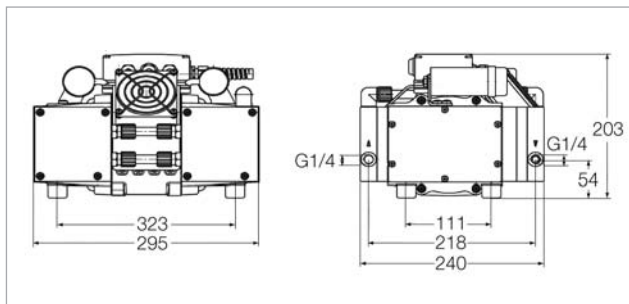


DIVAC 3.8 HV3

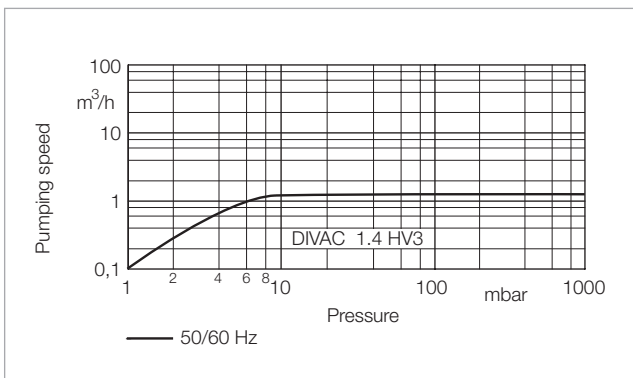
The three-stage DIVAC 1.4 HV3 and the DIVAC 3.8 HV3 provide especially in the lower pressure range a higher pumping speed compared to conventional diaphragm pumps. At the same time they are capable of attaining ultimate pressures below 2 mbar (1.5 Torr) and are thus very well suited as backing pumps for turbomolecular pumps. Owing to their compact design they are also suited for installation within pump systems.



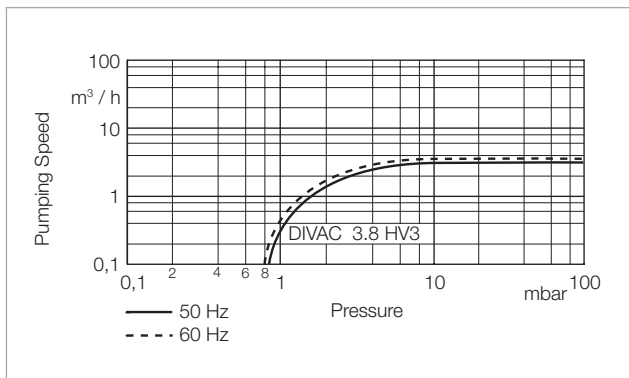
Dimensional drawing for the DIVAC 1.4 HV3



Dimensional drawing for the DIVAC 3.8 HV3



Pumping speed curve of the DIVAC 1.4 HV3



Pumping speed curve of the DIVAC 3.8 HV3

Technical Data

DIVAC

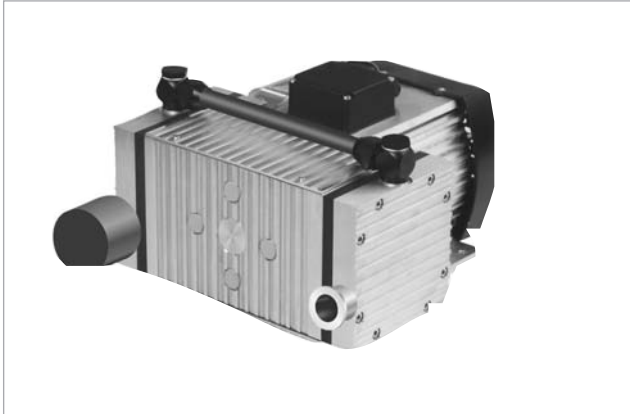
		1.4 HV3	3.8 HV3
Max. pumping speed			
50 Hz	m ³ /h (cfm)	1.3 (0.77)	3.4 (2.00)
60 Hz	m ³ /h (cfm)	–	3.8 (2.24)
Ultimate pressure	mbar (Torr)	≤ 1.5 (≤ 1.13)	≤ 1.0 (≤ 0.75)
Max. exhaust back pressure (absolute)	mbar (Torr)	1500 (1125)	1500 (1125)
Pump heads		3	3
Connection			
Inlet (suction side)		Hose nozzle ID 9	Hose nozzle ID 10
Exhaust (delivery side)		Hose nozzle ID 9	Hose nozzle ID 10
Thread (suction and delivery side)		G 1/8"	G 1/4"
Noise level acc. to DIN 45 635 Part 13, approx.	dB(A)	48	54
Permissible gas admission temperature, max.	°C (°F)	+5 to +40 (+41 to +104)	+5 to +40 (+41 to +104)
Permissible ambient temperature, max.	°C (°F)	+5 to +40 (+41 to +104)	+5 to +40 (+41 to +104)
Voltage / nominal frequency (1-ph. motor)			
Schuko plug	V / Hz	90 – 230 / 50-60	90 – 230 / 50-60
NEMA plug	V / Hz	–	115 / 50-60
Protective class	IP	20	20
Motor power	W	120	250
at ultimate pressure	W	35	190
Current consumption	A	1.3	1.7
Nominal speed, approx. (50/60 Hz)	min ⁻¹	1500	1500/1800
Dimensions (W x H x D), approx.	mm (in.)	324 x 158 x 226 (12.76 x 6.22 x 8.90)	295 x 240 x 203 (11.61 x 9.45 x 7.99)
Weight, approx.	kg (lbs)	10.5 (23.18)	18.9 (41.72)
Material			
Pump head		Aluminum	Aluminum
Structured diaphragm		EPDM	EPDM
Valves		EPDM	EPDM
Nozzles		PA	PA

Ordering Information

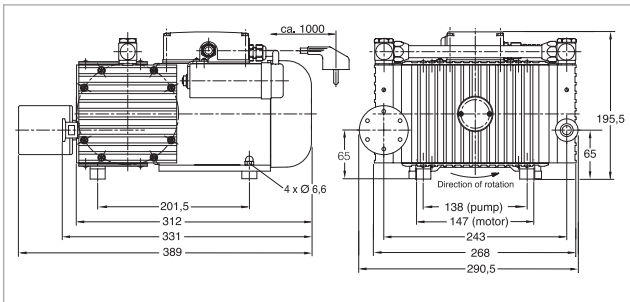
DIVAC

	1.4 HV3	3.8 HV3
	Part No.	Part No.
Diaphragm vacuum backing pumps for turbomolecular pumps including 1 m (3.5 ft) long mains cord, country-specific plug, silencer, rubber feet, as well as ON/OFF switch		
90 – 230 V / 50 – 60 Hz	127 90 V	–
230 V / 50 – 60 Hz	–	127 95 V
115 V / 50 – 60 Hz	–	127 96 V
Exhaust silencer		
1.4 with connection G 1/8"	127 90 A	–
3.8 with connection G 1/4"	–	127 95 A
Spare parts kit	EK057456	EK12768

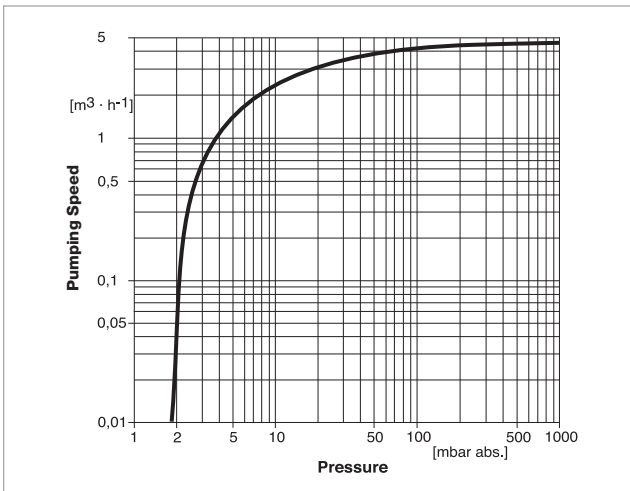
DIVAC 4.8 VT



DIVAC 4.8 VT



Dimensional drawing for the DIVAC 4.8 VT



Pumping speed curve of the DIVAC 4.8 VT

Technical Data

DIVAC 4.8 VT

Max. pumping speed (atm.)	m ³ /h (cfm)	4.8 (2.83)
Ultimate pressure (absolute)	mbar (Torr)	≤ 2 (≤ 1.5)
Max. exhaust back pressure (absolute)	mbar (Torr)	2000 (1500)
Pump heads		2
Connection		
Inlet (suction side)	DN	16 KF
Exhaust (delivery side)	DN	Silencer
Thread (suction and delivery side)	G	G 3/8"
Noise level acc. to DIN 45 635 Part 13, approx.	dB(A)	55
Permissible gas admission temperature, max.	°C (°F)	+5 to +40 (+41 to +104)
Permissible ambient temperature, max.	°C (°F)	+5 to +40 (+41 to +104)
Voltage / nominal frequency (1-ph. motor)		
Schuko plug	V / Hz	230 / 50 ± 10%
NEMA plug	V / Hz	115 / 60 ± 10%
Protective class	IP	54
Motor power	W	350
Current consumption	A	2.6
Nominal speed, approx. (50 Hz)	min ⁻¹	1500
Dimensions (W x H x D), approx.	mm (in.)	324 x 273 x 220 (12.76 x 10.75 x 8.66)
Weight, approx.	kg (lbs)	18.0 (39.74)
Material		
Diaphragm		EPDM
Valves		Viton
Pump head		Aluminum

Ordering Information

DIVAC 4.8 VT

	Part No.
Diaphragm vacuum backing pumps for turbomolecular pumps including 1 m (3.5 ft) long mains cord, country-specific plug, silencer, rubber feet, as well as ON/OFF switch 230 V ± 10% / 50 Hz	127 92
Spare parts kit consisting of 2 diaphragms, 4 valves, 4 valve gaskets, 4 piping gaskets	EK 127 97
Exhaust silencer	127 94

T = For use in connection with Turbomolecular pumps

L = Very low ultimate pressure (Low pressure)

V = Low vibration levels (Low Vibration)